

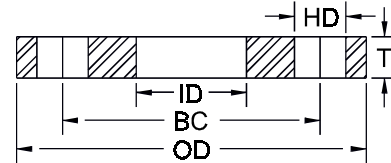
# Stainless Processing, Inc.

Coatesville, PA

Ph: 800-345-8126    Fax: 610-384-7362

## 150 lb. SLIP-ON PLATE FLANGES - FOR TUBE

- OD AND DRILLING for 1" through 24" tube size's per ASME / ANSI B16.5-1996 Class 150
- OD AND DRILLING for 30" & 36" tube size per ASME / ANSI B16.1-1989 Class 125
- Tolerances: See chart (page 11)



NOMINAL TUBE SIZE	THICKNESS (T)	OUTSIDE DIA. (OD)	INSIDE DIA. (ID)	NUMBER OF HOLES	HOLE DIA. (HD)	BOLT CIRCLE (BC)	SHIPPING WEIGHT IN POUNDS
1	.500	4.25	1.063	4	.62	3.12	1.73
1¼	.500	4.62	1.313	4	.62	3.50	2.00
1½	.500	5.00	1.563	4	.62	3.88	2.32
2	.500	6.00	2.063	4	.75	4.75	3.28
2½	.500	7.00	2.563	4	.75	5.50	4.50
3	.500	7.50	3.063	4	.75	6.00	4.88
3½	.500	8.50	3.563	8	.75	7.00	6.50
4	.500	9.00	4.063	8	.75	7.50	6.57
5	.500	10.00	5.063	8	.88	8.50	7.31
6	.500	11.00	6.063	8	.88	9.50	8.24
8	.500	13.50	8.063	8	.88	11.75	11.83
10	.625	16.00	10.063	12	1.00	14.25	18.39
12	.625	19.00	12.063	12	1.00	17.00	26.80
14	.625	21.00	14.063	12	1.12	18.75	33.05
16	.750	23.50	16.063	16	1.12	21.25	47.45
18	.750	25.00	18.063	16	1.25	22.75	47.21
20	1.000	27.50	20.063	20	1.25	25.00	73.76
24	1.000	32.00	24.063	20	1.38	29.50	92.64
30	1.000	38.75	30.063	28	1.38	36.00	124.16
36	1.250	46.00	36.063	32	1.62	42.75	207.40

**Notes:**

This table is intended for estimating purposes only. Applications vary, confirm all dimensions with your engineering department prior to ordering. Refer to ASME B16.5-1996 and B16.1-1989 standard for complete engineering and applications information. All dimensions are in inches unless otherwise noted. Inside diameter and thickness dimensions are application specific. Recommended bolts are 1/8" smaller in diameter than the bolt hole diameters shown.