

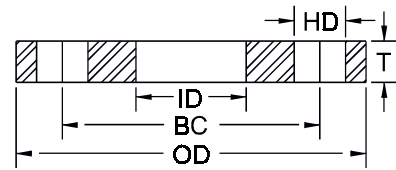
Stainless Processing, Inc.

Coatesville, PA

ph: 800-345-8126 fx: 610-384-7362

150 lb. BACKUP PLATE FLANGES - FOR PIPE

- OD AND DRILLING for ½" through 24" pipe size's per ASME / ANSI B16.5-1996 Class 150
- OD AND DRILLING for 30" & 36" pipe size per ASME / ANSI B16.1-1989 Class 125
- Tolerances: See chart (page 11)



NOMINAL PIPE SIZE	STYLE	THICKNESS (T)	OUTSIDE DIA. (OD)	INSIDE DIA. (ID)	NUMBER OF HOLES	HOLE DIA. (HD)	BOLT CIRCLE (BC)
½	FLAT FACE RING	.500	3.50	1.00	4	.62	2.38
	ANGLE FACE RING	.500	3.50	1.25	4	.62	2.38
¾	FFR	.500	3.88	1.18	4	.62	2.75
	AFR	.500	3.88	1.44	4	.62	2.75
1	FFR	.500	4.25	1.44	4	.62	3.12
	AFR	.500	4.25	1.69	4	.62	3.12
1¼	FFR	.500	4.62	1.81	4	.62	3.50
	AFR	.500	4.62	2.06	4	.62	3.50
1½	FFR	.500	5.00	2.06	4	.62	3.88
	AFR	.500	5.00	2.25	4	.62	3.88
2	FFR	.500	6.00	2.63	4	.75	4.75
	AFR	.500	6.00	2.88	4	.75	4.75
2½	FFR	.500	7.00	3.13	4	.75	5.50
	AFR	.500	7.00	3.38	4	.75	5.50
3	FFR	.500	7.50	3.75	4	.75	6.00
	AFR	.500	7.50	4.00	4	.75	6.00
4	FFR	.500	9.00	4.75	8	.75	7.50
	AFR	.500	9.00	5.00	8	.75	7.50
5	FFR	.500	10.00	5.75	8	.88	8.50
	AFR	.500	10.00	6.00	8	.88	8.50
6	FFR	.500	11.00	6.88	8	.88	9.50
	AFR	.500	11.00	7.13	8	.88	9.50
8	FFR	.500	13.50	8.88	8	.88	11.75
	AFR	.500	13.50	9.19	8	.88	11.75
10	FFR	.625	16.00	11.00	12	1.00	14.25
	AFR	.625	16.00	11.38	12	1.00	14.25
12	FFR	.625	19.00	13.00	12	1.00	17.00
	AFR	.625	19.00	13.63	12	1.00	17.00
14	FFR	.625	21.00	14.25	12	1.12	18.75
	AFR	.625	21.00	14.88	12	1.12	18.75
16	FFR	.625	23.50	16.25	16	1.12	21.25
	AFR	.625	23.50	16.88	16	1.12	21.25
18	FFR	.750	25.00	18.25	16	1.25	22.75
	AFR	.750	25.00	18.88	16	1.25	22.75
20	FFR	.750	27.50	20.25	20	1.25	25.00
	AFR	.750	27.50	20.88	20	1.25	25.00
24	FFR	1.000	32.00	24.25	20	1.38	29.50
	AFR	1.000	32.00	24.88	20	1.38	29.50
30	FFR	1.000	38.75	30.25	28	1.38	36.00
	AFR	1.000	38.75	30.88	28	1.38	36.00
36	FFR	1.250	46.00	36.25	32	1.62	42.75
	AFR	1.250	46.00	36.88	32	1.62	42.75

Notes:

This table is intended for estimating purposes only. Applications vary, confirm all dimensions with your engineering department prior to ordering. Refer to ASME B16.5-1996 and B16.1-1989 standard for complete engineering and applications information. All dimensions are in inches unless otherwise noted. Inside diameter and thickness dimensions are application specific. Recommended bolts are 1/8" smaller in diameter than the bolt hole diameters shown.